

# Product Specification

Product Name	Current transformer	Model	SCT024TS
--------------	---------------------	-------	----------

Characteristics: Suspension installation, crimp terminal output. Mechanical strength: the number of switching is not less than 1000 times.

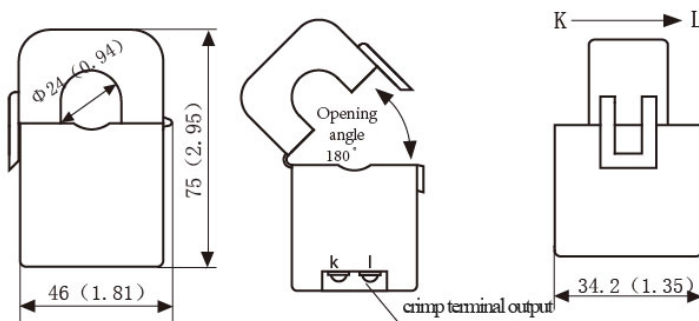
## Technical Data

$I_{PN}$	Rated input	200A
$I_{PM}$	Max. detection input	240A
$I_{OUT}$	Rated output	5A
X	Accuracy	$\pm 1\%$
$\epsilon_L$	Linearity	$\leq 0.2\%$
N	Turns ratio	1:40
$\Phi$	Phase shift	
$R_L$	Max. Sampling resistance	$2\Omega$
$V_{PN}$	Work voltage	660V
f	Work frequency	50/60Hz
$T_A$	Operating temperature	-25..+60°C
$T_S$	Storage temperature	-30..+90°C
Vd	Dielectric strength, 50 Hz, 1 min	3.5KV



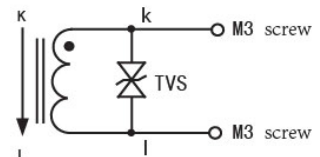
Fire resistance	UL94-V0
Material of core	Silicon steel sheet
Mounting type	Suspension
Weight	204g

Dimension ( mm(in). 1 mm= 0.0394 inch)



Front view

Side view



TVS: Transient voltage suppressor

Schematic diagram