



### TECHNICAL INFORMATION

Watts:	48
Lumens:	4000
Input Power:	AC:200-240V, 50/60Hz
Long Life:	20,000 Hours
Unit Color:	White
Body Type:	Plastic
PF:	>0.9
LED Chip Type:	SMD 2835
CRI:	>80
Operation Temperature:	-20°C to +45°C
Dimmable:	No
Beam Angle:	120°
Color:	6500K
Dimension:	1500x60x35mm

### S SERIES

V-TAC's LED Lighting range includes lighting that fulfills the needs of various end-users and industries, offering efficient and innovative products that provide modern solutions at an affordable price. We are proud to also provide extended multi-year warranty on our products, as well as detailed support.

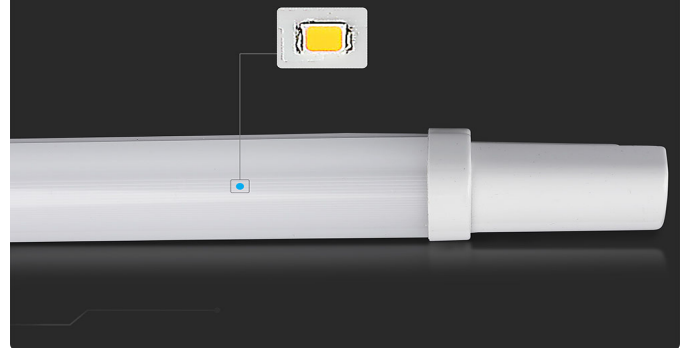
*One brand, endless solutions..*

SKU: 6468 - 1415 940

[View more details](#)

### SMD LED'S

Efficient LED with integrated aluminium heatsink for excellent heat dissipation which prolongs lifespan



### FEATURES

- Using high power SMD technology which makes it more reliable and durable
- Complete protection from water, dust and corrosion - IP65 Rated
- Designed for maximum efficiency & minimal glare
- Save up to 80% in electricity consumption compared to a fluorescent lighting fixture
- Long Lifespan, Low maintenance and energy saving
- Excellent heat dissipation
- Suitable for parking lots, warehouses, garages, storage docks, workshops etc.
- Recommended daily usage: 10 - 12 hours \*Exceeding recommended daily usage will void warrant

### PACKAGING

Gross Weight: 0.49  
Unit CBM: 0.005406  
Dimension: 1500x60x35mm

### MASTER BOX PACKAGING

Box Qty: 20

### LISTING DETAILS

Commodity Code: 9405403990  
EanCode: 3800157640985

CE/EMC

CE/LVD

