

INSTALLATION INSTRUCTION

VT-768 LED SOLAR LIGHT



INTRODUCTION

Thank you for selecting and buying V-TAC LED product. V-TAC will serve you the best. Please read these instructions carefully before starting the installing and keep this manual handy for future reference. If you have any other query, please contact our dealer or local vendor from whom you have purchased the product. They are trained and ready to serve you at the best.

SPECIFICATION

SKU	7523
Power/Lumen	3W / 400LM
LEDs	SMD2835*30PCS
Li-ion Battery	2000mAh / 3.7V, 18650 Replaceable
Solar Panel	2.3Wp, Mono-crystalline silicon
Working Mode	3 different lighting modes
Detection Angle/Area	60°/ 2-6Mtr
Visible Distance	6-7Mtr
IP Degree	IP 65
Lifespan	35,000hrs
Installation Height	2-4Mtr

FEATURES



ZERO Electricity Cost



Solar Powered



PIR Detective



Light on/off automatically

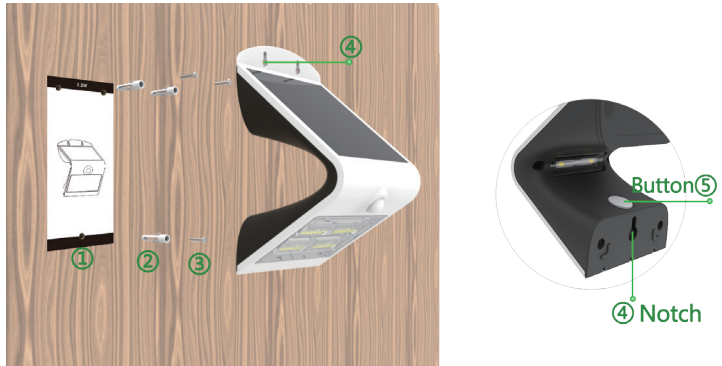


Outdoor



Cordless

INSTALLATION

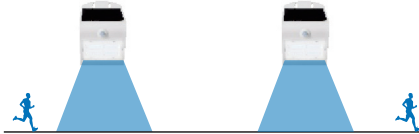
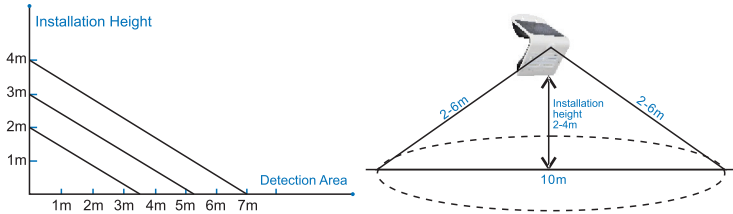


1. Drill 3 holes $\Phi 6\text{mm}$ as advised in above picture.
2. Fix 3 expansion plugs into the holes.
3. Fix a screw to the lower expansion plug with notch onto the screw.
4. Straighten the whole lamp and fasten the upper screws.
5. Press the back button to switch on lamp, adjust to the demanded working mode.

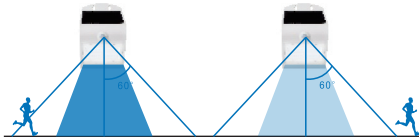
NOTICE

1. Pls install this light onto flat surface directiona
2. The lamp will light up when the environmental brightness is less than 30lux.
3. Inside battery is replaceable, 18650 Li-ion battery
4. Lamp need to be installed 2-4Mtr from the ground.

WORKING MODES



Mode A: Automatically turns on at the dusk (<30 lux) and remains 20% bright, up to 5 hours after which it turns off.



Mode B: Automatically turns on to full brightness (400lm) when motion is detected in the range 2-6 mtrs and then turns to 3% brightness in 20 seconds of no motion.



Mode C: Automatically turns on to full brightness (400lm) when motion is detected in the range 2-6 mtrs and then turns off in 30 seconds of no motion.

WARRANTY

- This product is warranted from manufacturing defect only.
- The warranty does not apply to damage caused by incorrect installation or abnormal wear and tear.
- The company gives no warranty against damage to any surface due to incorrect removal and installation of the product.