



TECHNICAL INFORMATION

Watts:	36
Lumens:	3000
Input Power:	AC:200-240V, 50/60Hz
Long Life:	20,000 Hours
Unit Color:	White
Body Type:	Plastic
PF:	>0.9
LED Chip Type:	SMD 2835
CRI:	>80
Operation Temperature:	-20°C to +45°C
Dimmable:	No
Beam Angle:	120°
Color:	6500K
Dimension:	1200x60x35mm

S SERIES

V-TAC's LED Lighting range includes lighting that fulfills the needs of various end-users and industries, offering efficient and innovative products that provide modern solutions at an affordable price. We are proud to also provide extended multi-year warranty on our products, as well as detailed support.

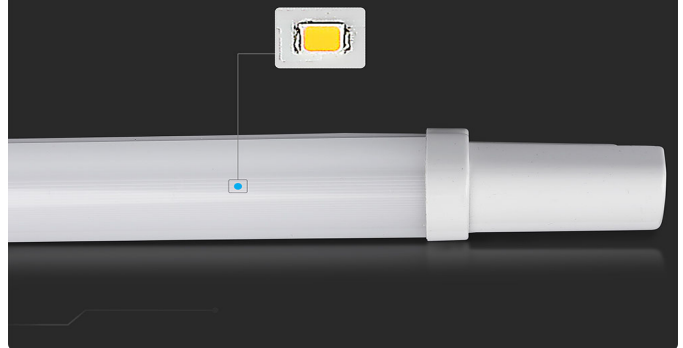
One brand, endless solutions..

SKU: 6470 - 1406 940

[View more details](#)

SMD LED'S

Efficient LED with integrated aluminium heatsink for excellent heat dissipation which prolongs lifespan



FEATURES

- Using high power SMD technology which makes it more reliable and durable
- Complete protection from water, dust and corrosion - IP65 Rated
- Designed for maximum efficiency & minimal glare
- Save up to 80% in electricity consumption compared to a fluorescent lighting fixture
- Long Lifespan, Low maintenance and energy saving
- Excellent heat dissipation
- Suitable for parking lots, warehouses, garages, storage docks, workshops etc.
- Recommended daily usage: 10 - 12 hours *Exceeding recommended daily usage will void warrant

PACKAGING

Gross Weight: 0.39
Unit CBM: 0.004684
Dimension: 1200x60x35mm

MASTER BOX PACKAGING

Box Qty: 20

LISTING DETAILS

Commodity Code: 9405403990
EanCode: 3800157641005

CE/EMC

CE/LVD

